

PRACTICE Interim Assessment #2

On the Division Unit

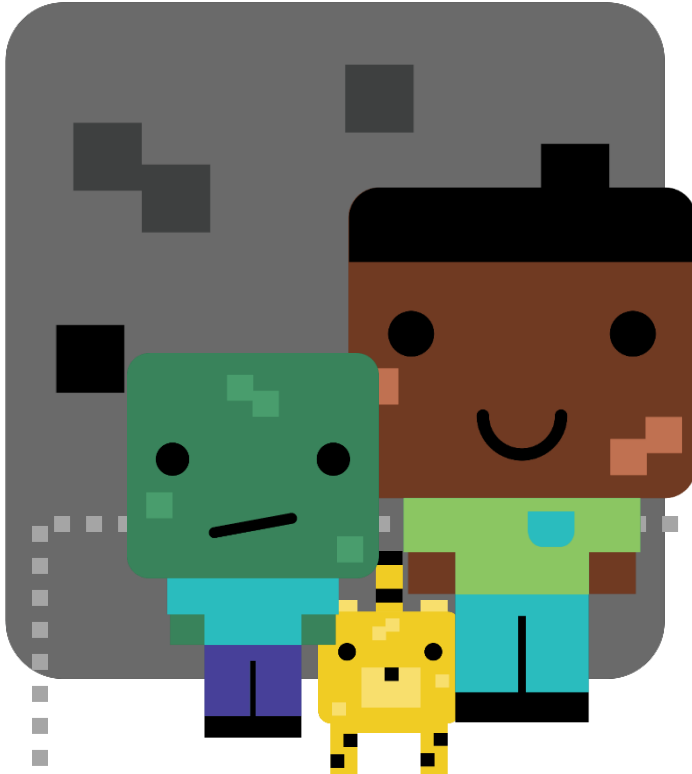
Welcome to

MATH

CLASS

4th graders!

Please have scratch
paper ready to go to
help you attack those
math problems today!
You're going to do
ggrrrrrrreat!!!



TODAY'S LESSON:

PRACTICE Interim Assessment #2

Question 1 –

Part A - Select the equation that has the same unknown number as $86 \div 2 = \bigcirc$. Select the correct multiple-choice answer by clicking on the appropriate buttons provided.

- A. $2 \times 86 = \bigcirc$
- B. $86 \times \bigcirc = 2$
- C. $2 \times \bigcirc = 86$
- D. $\bigcirc \times 86 = 2$

Part B - Find the quotient. **Show** your work.

$$86 \div 2 = \underline{\hspace{2cm}}$$

Question 2 –

Show how to use an area model to solve this problem. Type your final quotient into the answer box.

$$458 \div 3 = \underline{\hspace{2cm}}$$

Question 3 -

Part A - Abiba says that **all** numbers ending in 6 can be evenly divided by 3 without a remainder.

Is Abiba correct? Type only the word **Yes** or **No** in the answer box.

Part B - Give at least 2 examples below that prove whether Abiba is or is not correct. (The examples you choose, **MUST** prove the correct Yes or No response above. **Show** your work.)

--	--

Question 4 -

Josephina picks 63 tulips. She puts exactly 7 tulips in each vase to give to friends. How many vases will Josephina use?

Show or explain why your answer is correct below. Also, click to type your final answer into the answer box.

Use the multiple-choice option to show how many vases Josephina will need.

Question 5 -

Zelda needs 429 ants for her ant farm. The ants come in boxes of 8.

How many boxes of ants does Zelda need to order?
(HINT - If you have any remaining ants, an extra box will be needed.) **Show** why your answer is correct.

Use the multiple-choice option to show how many boxes Zelda will need.