



SBA

Smarter Balanced
Assessment

SBA:

- This is a state required test.
- This is a “rescheduled” test from the spring.
- Current 4th graders will be testing on 3rd grade concepts.
- You will receive an email for your testing site and date. Confirming that your student will attend the assigned testing dates will be required as soon as you receive the email. Coming out VERY soon.
- This test has been shortened compared to the normal spring state assessment.

Student View...Timeline of a typical testing session

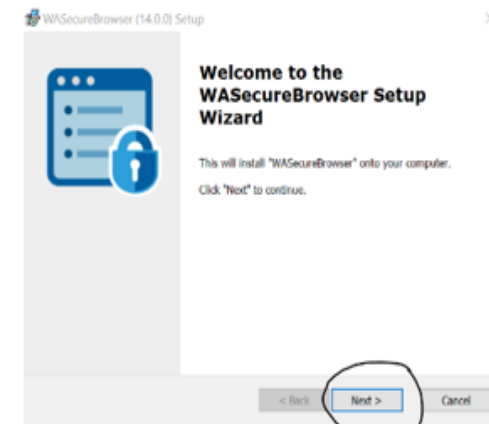
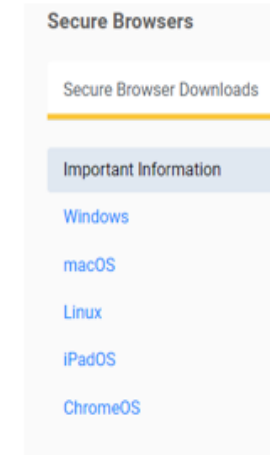
- You will arrive at your testing site at the sign in time listed on your test ticket email. You don't arrive early because you know your TA is working with other students or setting up the site before your check in time.
 - *If you are in Grades 3-8, your authorized adult must sign you in. If you are in Grades 9-12 and have your own picture ID, you can sign yourself in, or have your authorized adult come with you for sign in.*
- You and your authorized adult see WAVA staff at the entrance of the testing site. There is a WAVA Staff Member checking to make sure you don't feel sick and reminding you of the health and safety requirements. They ask you what group you are in which is printed on your test ticket email. They direct you to the TA of your group for check in
- You meet your Test Administrator (TA) and your authorized adult signs you in on the paper attendance roster. You give any electronic devices you have (cell phone, watch, Fitbit, etc.) to your authorized adult to hold for you during your test.
- Once all the other students in your group arrive (will be 15 or less), you say goodbye to your authorized adult and follow your TA into the testing area to set up.
- First thing to do is wash your hands. If restroom facilities are not convenient, your TA will provide you with a sanitizing wipe so you can disinfect your hands and/or your table area.
- Your TA will help you find your seat and set up your computer. If you brought a purse or a bag, the TA will show you where you can place it (out of reach) while you test. If you couldn't bring the laptop you were practicing with from home, the TA will loan you one.

Student View...Timeline of a typical testing session

- When your group is all setup and ready to go, your TA will read the instructions and help you login to your test. Your login information will be on your Test Ticket email. If you don't have that, your TA will look you up in their computer and help you login.
- The Fall 2021 tests are shorter than usual, and still untimed. You don't have to rush:
 - ELA takes less than 75 minutes
 - Math takes less than 60 minutes
 - Science takes less than 45 minutes
- Do your best to answer the questions to the best of your ability and try not to stress about questions that are unfamiliar. We KNOW there are questions on the test that you might not know the answers to. If you get stuck, just give your best guess and move on. You got this!
- The TA will walk around the room to make sure everyone is doing OK and doesn't need any redirection or support. If you need something, raise your hand.
- When you finish your test, submit it, then close your laptop and sit quietly and wait for the session to end. Other students might need more time, so don't distract them! Everyone works at their own pace and that's OK!
- If you don't finish by the end of the session, that's OK too. The TA will talk to your authorized adult to see if you can stay with the next testing session for a little more time.
- When the session ends, pack up your belongings and go with your TA back to the entrance of the test site to sign out with your authorized adult. Once you are signed out, take a break and be proud of yourself! Go home and take a break!

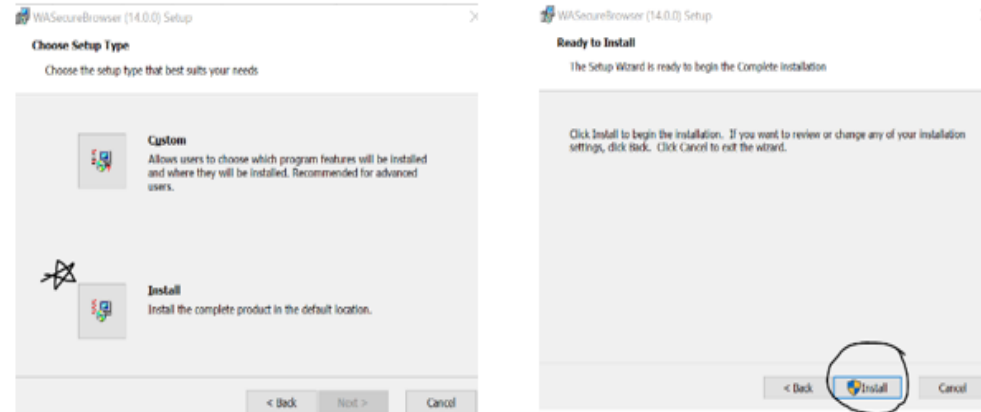
Secure Testing Browser:

1. <https://wa.portal.cambiumast.com/secure-browsers.html>
2. Follow directions on website or the shortened version below.
3. Select your device Operating System from the menu on the left of your screen:
4. Follow all instructions for your operating system to install the secure browser.



Secure Testing Browser:

5. Select to Install and Install once more.



6. Select “Finish”

7. A desktop icon shortcut should appear



8. Once you open this secure browser, there will be a “Practice Test” selection on the left side. You may use this at any time to become familiar with sample questions, tools available, etc.