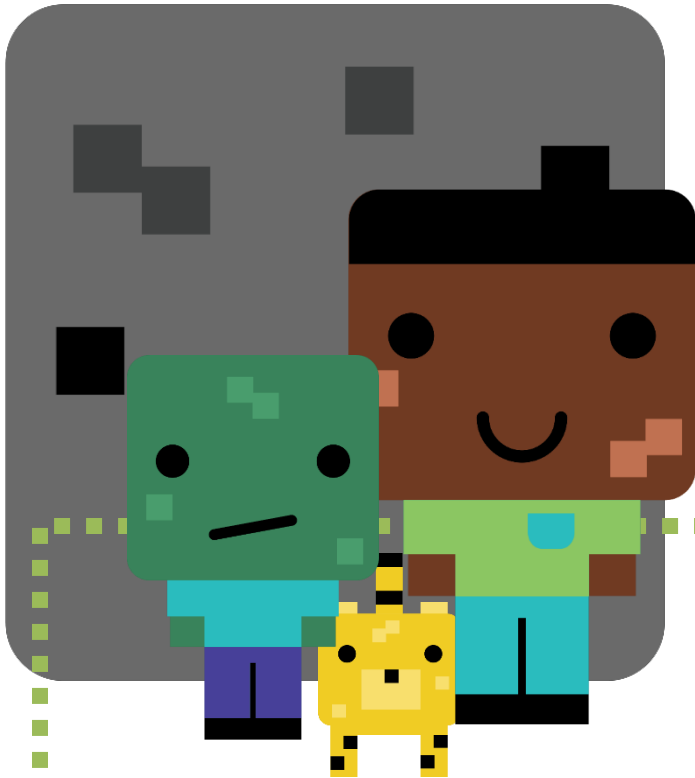


Welcome to

MATH

CLASS

4th graders!



TODAY'S LESSON:
Interim Review #1

Question 1.

Part A: Which number makes the equation true? Write the answer on the line.

$$8 \times 422 = 8 \times (\underline{\quad\quad} + 20 + 2)$$

Part B: Use this strategy to find the product of 8×422 . Show your thinking. Write the product on the line

Type the final product into the box provided.

$$8 \times 422 = \underline{\quad\quad\quad}$$

Question 2.

Complete an area model to solve 276×4 .



Type the final product into the box provided.

$$276 \times 4 = \underline{\quad\quad\quad}$$

Question 3.

Solve.

Be sure to show your thinking. You can use your favorite strategy.

$$24 \times 56 = \underline{\hspace{2cm}}$$

Question 4.

Melvin states, “When you multiply a 2-digit whole number by another 1-digit whole number, the product is a 2-digit whole number.”

Is Melvin’s claim always true, sometimes true, or never true?

- ☒ **A** Always true
- ☐ **B** Sometimes true
- ☐ **C** Never true

Give at least two specific examples to support your answer.

Question 5.

Abdula uses an area model strategy to solve 17×33 .

Will Abdula get the correct total product? _____



Why or why not? Explain in words or numbers in the box provided.

Question 6.

Steph's baby chimp weighs 13 pounds. The baby hippo she saw at the zoo weighs 3 times as much as the chimp.

How much does the hippo weigh?

- A** 39
- B** 44
- C** 30
- D** 52

Show how to use an area model to solve this problem.